



**Welcome**  
— to the —  
**webinar**



# The Healthcare Ecosystem

Parallel tracks of equal value. Each zone offers distinct advantages in global mobility, earning potential, and entrepreneurship.



## Core Clinical Care

Direct patient diagnosis and treatment.

- BDS (Dental Surgery)
- AYUSH (Ayurveda, Homeopathy)
- Veterinary Science



## Rehab & Direct Care

Patient recovery and vital support.

- BSc Nursing
- Bachelor of Physiotherapy (BPT)



## Diagnostic & Tech

The technological backbone of medicine.

- Radiology & Imaging Tech
- Allied Health Sciences
- Pharmacy (BPharm / Pharm D)



## Elite Research & Applied Sciences

Global innovation and deep tech.

- IISER & NISER
- Biotechnology
- Forensic Science



# Core Clinical Practice: Dental Surgery (BDS)



## Spec Card



**Overview:** Focus on oral health, maxillofacial surgery, and high-demand cosmetic dentistry.



**Duration:** 5 years (including internship)



**Fee Bracket:** ₹0.5L – ₹12L total



**Career Scope:** General Dentist, Surgeon in Corporate Clinic Chains.



**Earning Potential:** ₹3L – ₹8L/year (Fresher) → ₹1L – ₹3L+/month (Own Clinic)



**Highest Entrepreneurship Scope:** Massive upside in owning cosmetic setups, clear aligner studios, and catering to dental tourism.

# Integrative Medicine: The AYUSH Streams



## Spec Card



**Overview:** BAMS (Ayurveda), BHMS (Homeopathy), BNYS (Naturopathy), BUMS (Unani). Preventative and lifestyle-focused care.



**Duration:** 5.5 years (including internship)



**Fee Bracket:** ₹1L – ₹10L total



**Career Scope:** Wellness consultants, integrative hospital physicians, spa/retreat experts.



**Earning Potential:** ₹3L – ₹7L/year (Fresher) → Highly scalable with private brand/products.



**Riding the Global Wellness Wave:** 70%+ of Indians utilize traditional systems, with booming international demand in luxury resorts, yoga retreats, and herbal nutraceutical brands.

# Clinical & Field: Veterinary Science (BVSc & AH)



## Spec Card



**Overview:** Comprehensive animal medicine, livestock health, and dairy/poultry consulting.



**Duration:** 5 – 5.5 years



**Fee Bracket:** Highly affordable (Predominantly Govt. institutes)



**Career Scope:** Pet clinic surgeons, govt. livestock officers, pharma feed consultants.



**Earning Potential:** ₹4L – ₹8L/year (Govt/Fresher) → Exceptional upside in urban private practice.



### Highlight Box

**The Pet Culture Boom:** Driven by explosive urban pet ownership. Private clinics enjoy high ticket sizes per patient with excellent client retention.



# Direct Patient Care: **Nursing** & **Physiotherapy**



## BSc Nursing

- **Duration & Fees:** 4 years | ₹1L – ₹8L total.
- **Scope:** ICU/OT Nursing, Clinical Instructors, Hospital Administration.
- **Earning:** ₹3L – ₹7L/year (India) → Scales to \$60k - \$100k+/year in developed nations.



## Physiotherapy (BPT)

- **Duration & Fees:** 4.5 years | ₹2L – ₹7L total.
- **Scope:** Rehab centers, sports medicine, corporate ergonomics, home care.
- **Earning:** ₹3L – ₹7L/year (Fresher) → ₹1L – ₹2L+/month with established clinic.



### Highlight Box

**The Ultimate Migration Pathway:** Severe global shortages make this the fastest, most reliable route to the US, UK, Canada, and Australia.



### Highlight Box

**Independent Practice:** Excellent scope for self-owned physio centers, elite sports team tie-ups, and regional home-care networks.

# Tech & Diagnostics: Allied Health Sciences



## Spec Card



**Overview:** The technological backbone of modern diagnostics (BSc Radiology & Imaging Tech, Medical Lab Tech, Operation Theatre Tech).



**Duration:** 3 – 4 years



**Fee Bracket:** ₹1.5L – ₹6L total



**Career Scope:** MRI/CT Technologist, Cath Lab Tech, Diagnostic Center Managers.



**Earning Potential:** ₹2.5L – ₹6L/year (Fresher) → ₹10L+ for senior corporate hospital roles.



### Highlight Box

**High Tech, Zero Clinical Risk:** Perfect for students who love medical technology but want to avoid primary patient-care liabilities. Strong demand in Gulf and Western healthcare systems.

# Therapeutics & Retail: Pharmacy



## Spec Card



**Overview:** BPharm (4 yrs) / Pharm D (6 yrs). The critical bridge between chemical manufacturing, clinical therapy, and patient healing.



**Career Scope:** Clinical Pharmacist, QA/QC, Regulatory Affairs, Medical Representatives.



**Earning Potential:** ₹2.5L – ₹5L/year (Fresher) → High corporate ceilings with experience.

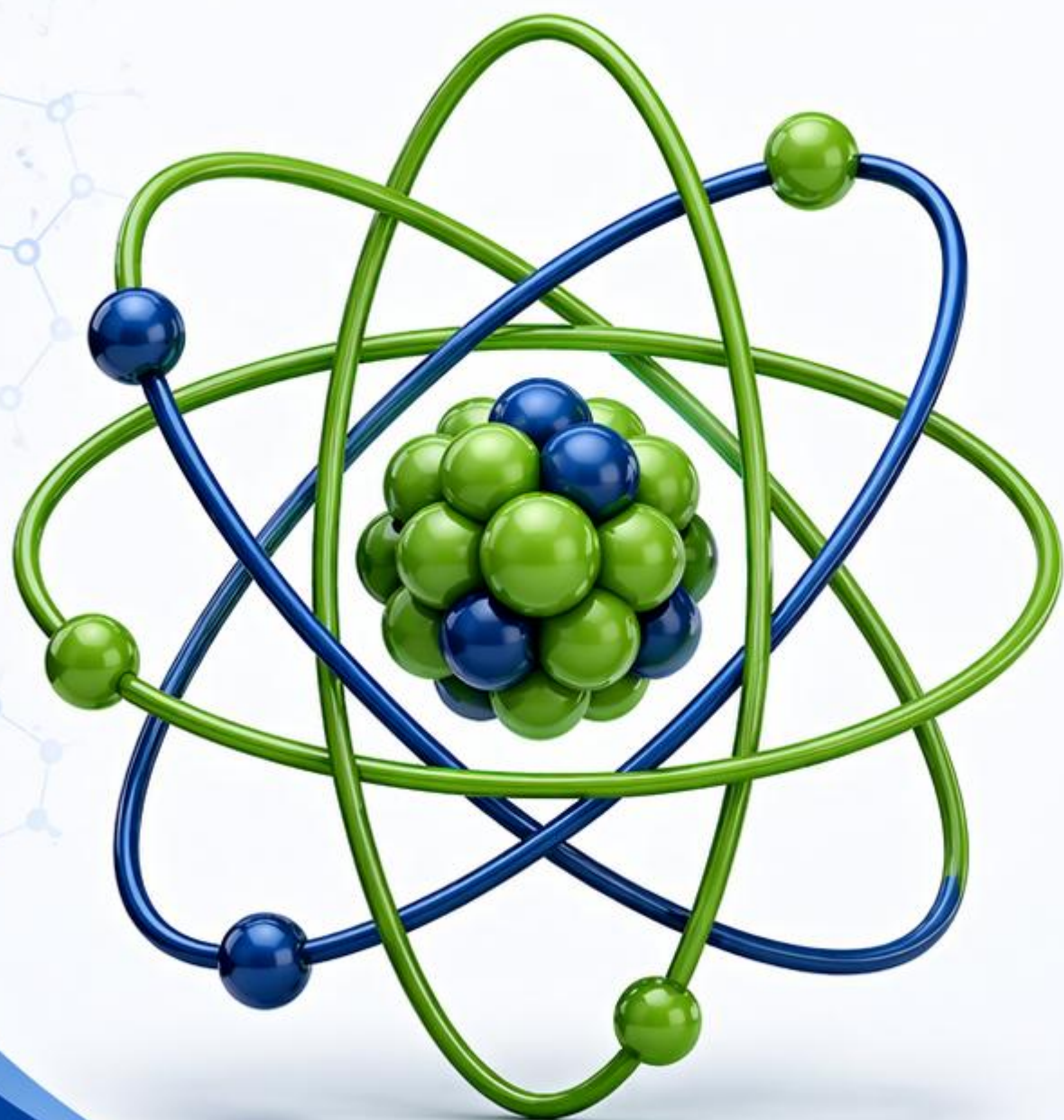


## Highlight Box

### Dual Power: Corporate & Retail

Uniquely versatile. Graduates can pursue global drug development, or enter high-cash-flow entrepreneurship by owning wholesale/retail pharmacy chains.

# Elite Pure Science: IISER & NISER



## Spec Card



**Overview:** 5-year BS-MS / Integrated MSc via IAT & NEST exams. Intensive focus on pure research (Physics, Chem, Bio, Maths).



**Fees & Perks:** IISER (~₹4L total), NISER is uniquely subsidized (<₹20k/yr) and provides a guaranteed ₹60k/yr stipend to all students.



**Career Scope:** CSIR/ISRO/BARC Scientists, Deep-Tech Analytics, Quantitative Finance.



**Earning Potential:** ₹8L – ₹25L+/year (Post-PG/PhD or in data/analytics roles).



### Highlight Box

**The Global Ivy Pipeline:** These institutes offer an unmatched launchpad for fully-funded MS/PhD programs in top-tier global universities, directly competing with IIT outcomes.

# Applied Sciences: Biotechnology



## Spec Card



**Overview:** BSc / BTech in Biotechnology (3-4 years). The frontier of global health, encompassing vaccines, genetics, and bioinformatics.



**Fee Bracket:** ₹1.5L – ₹7L total



**Career Scope:** Lab Associate, Clinical Research Coordinator, Bioinformatician.



**Earning Potential:** ₹2.5L – ₹6L/year (UG only) → Expands exponentially with MS/PhD.



**High Global Ceiling:** While entry-level Indian salaries are modest, international demand is massive. Starting salaries for biomedical/biotech roles abroad frequently hit \$50k – \$90k+ annually.

# Niche Science: Forensic Science



## Spec Card



**Overview:** BSc Forensic Science (3 years). Specialized training in crime scene investigation, toxicology, ballistics, and cyber forensics.



**Fee Bracket:** ₹1.5L – ₹4.5L total



**Career Scope:** State/Central Govt. Forensic Labs, CBI, Police Depts, Private Cyber-Consulting.



**Earning Potential:** ₹2.5L – ₹5L/year (Private Entry) → ₹40k – ₹80k+/month in Govt. roles.



**The Investigator Route:** Highly specialized skill set. Excellent demand for MS/PhD graduates in the US, UK, and Canada, with average salaries ranging from \$60k to \$100k+.

# Management, Nutrition & The Paradigm Shift



## Public Health & Mgmt (BHA / MPH)

**Scope:** Hospital administration, NGO program managers, health operations.

**Salary Edge:** ₹3L – ₹10L+ band. High corporate salary ceilings as private hospital chains expand globally.



## Nutrition & Dietetics (BSc)

**Scope:** Clinical dietitians, sports nutrition, corporate wellness.

**Growth Edge:** Extremely scalable via personal branding, online consultation models, and product collaborations.

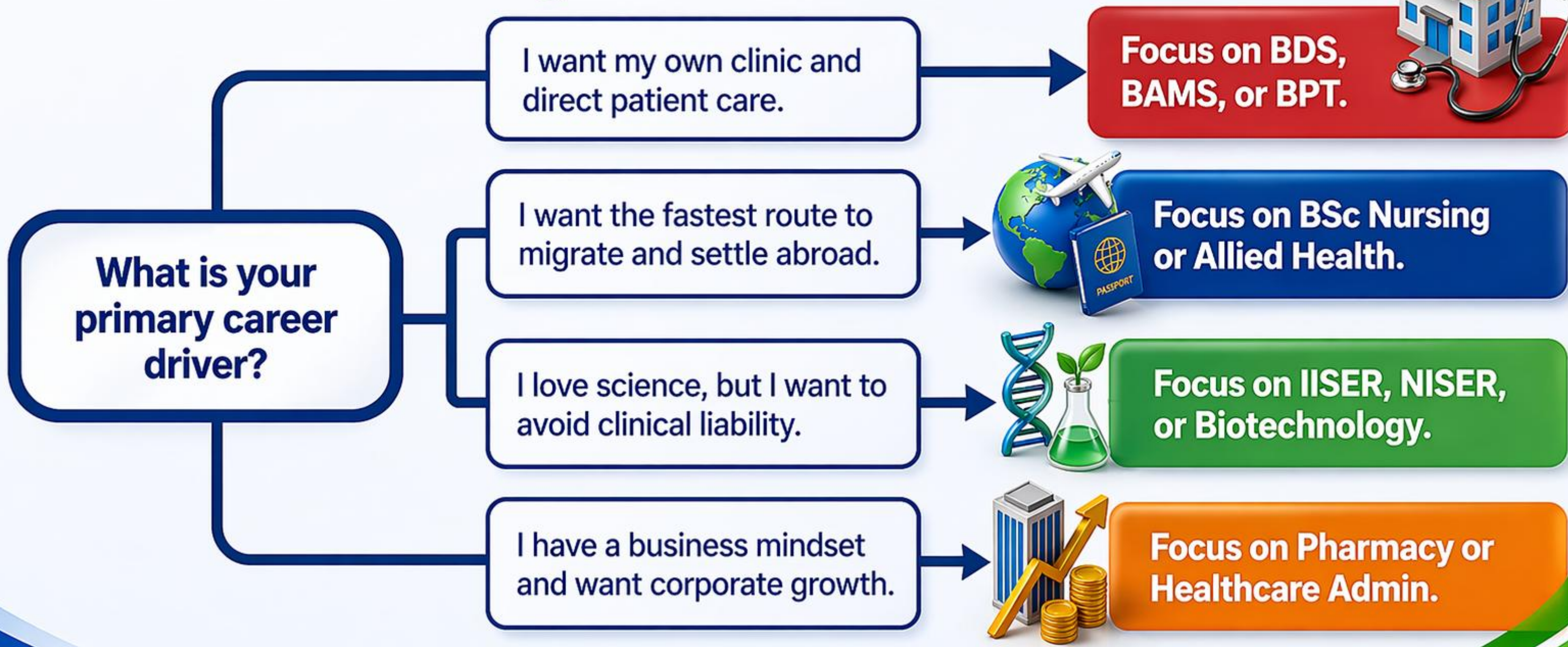


## The Paradigm Shift (Tech, Business, Law)

**Scope:** Pivoting away from healthcare entirely into BTech, BBA, Law, or Design.

**Strategic Edge:** Highly lucrative for versatile students willing to apply their rigorous NEET work ethic to new domains.

# Choosing Your Path: The Counseling Framework





For a **BIOLOGY STUDENT**,  
the journey does not end with MBBS.

**It Expands.**



Modern Healthcare and science  
are deeply **interconnected**,  
**multidisciplinary** ecosystem.



Whether you choose the **clinic**,  
the **laboratory**, the **technology hub**,  
or the **corporate boardroom**, your  
foundational knowledge of biology  
is your **biggest asset**.



A single entrance exam  
**does not define**  
**your trajectory.** Your next  
**decision does.**

